

Homework/Extension

Step 10: Introducing Greater Than, Less Than and Equal To

National Curriculum Objectives:

Mathematics Year 1: (1N4) [Identify and represent numbers using objects and pictorial representations including the number line, and use the language of: equal to, more than, less than \(fewer\), most, least](#)

Mathematics Year 1: (1N2c) [Read and write numbers from 1 to 20 in numerals and words](#)

This resource also covers the following objective from Year 2:

Mathematics Year 2: (2N2b) [Compare and order numbers from 0 up to 100; use \$<\$, \$>\$ and \$=\$ signs](#)

Differentiation:

Questions 1, 4 and 7 (Varied Fluency)

Developing Draw objects to complete the statement. Statement with up to 5 objects arranged in lines and inequality expressed as words.

Expected Draw objects to complete the statement. Statement with up to 10 objects arranged in a group and inequality expressed as symbols.

Greater Depth Draw objects on both sides to complete the statement. Statement with up to 10 objects and inequality expressed as symbols.

Questions 2, 5 and 8 (Varied Fluency)

Developing Identify the statement that compares the objects correctly. Up to 5 objects arranged in lines. Inequality expressed as words.

Expected Identify the statement that compares the objects correctly. Up to 10 objects arranged in a line or in groups. Inequality expressed as symbols.

Greater Depth Identify the statement that compares the objects correctly. Up to 10 objects arranged randomly. Inequality expressed as words and symbols.

Questions 3, 6 and 9 (Reasoning and Problem Solving)

Developing Explain which statement is correct. Up to 5 objects arranged in a line. Statement includes numerals and inequality expressed as words.

Expected Explain which statement is correct. Up to 10 objects arranged in a group. Statement includes numerals and inequality symbols.

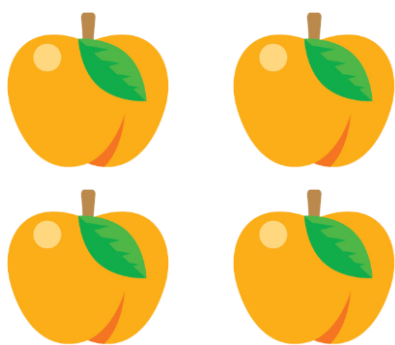
Greater Depth Explain which statement is correct. Up to 10 objects arranged randomly. Statement includes numerals, words and inequality symbols.

More [Year 1 Place Value](#) resources.

Did you like this resource? Don't forget to [review](#) it on our website.

Introducing Greater Than, Less Than and Equal To

1. Draw some objects on the other side to make the statement correct.



is more than



VF
HW/Ext

2. Tick the statement that is correct.

A.



is less than



B.



is less than



VF
HW/Ext

3. May is looking at these animals. She says,



3 is less than 4

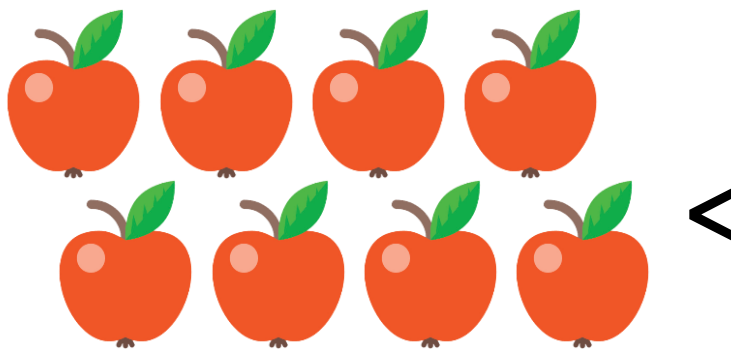
Is she correct? Explain why.



RPS
HW/Ext

Introducing Greater Than, Less Than and Equal To

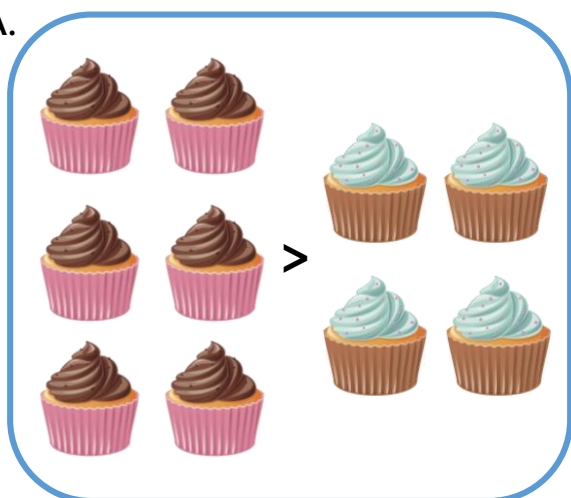
4. Draw up to 10 objects on the other side to make the statement correct.



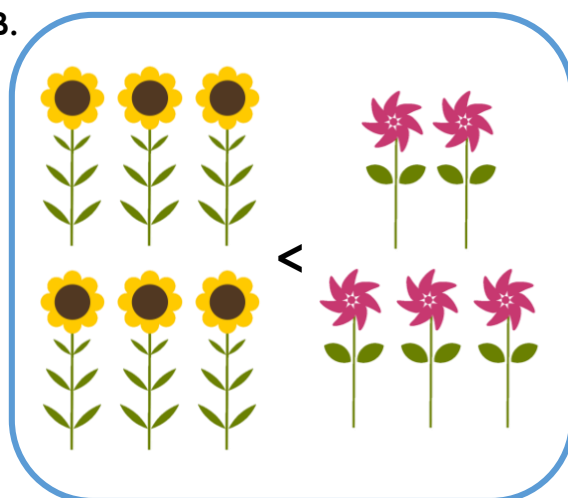
VF
HW/Ext

5. Tick the statement that is correct.

A.



B.



VF
HW/Ext

6. Lou is looking at these objects. He says,



$$9 < 6$$

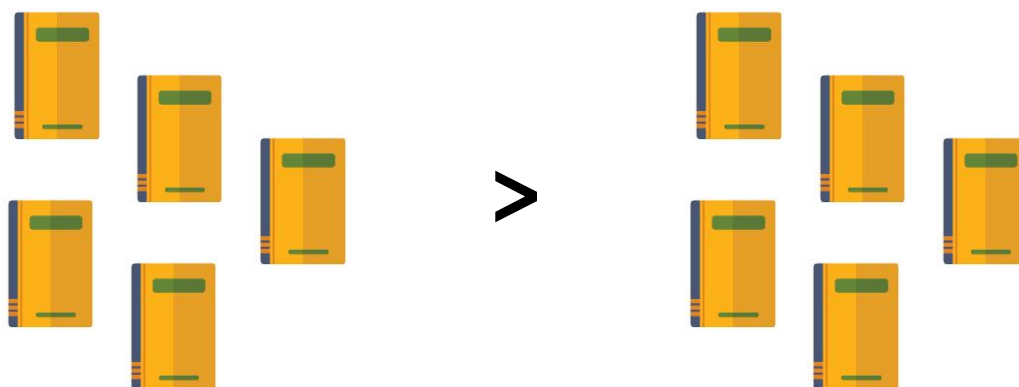
Is he correct? Explain why.



RPS
HW/Ext

Introducing Greater Than, Less Than and Equal To

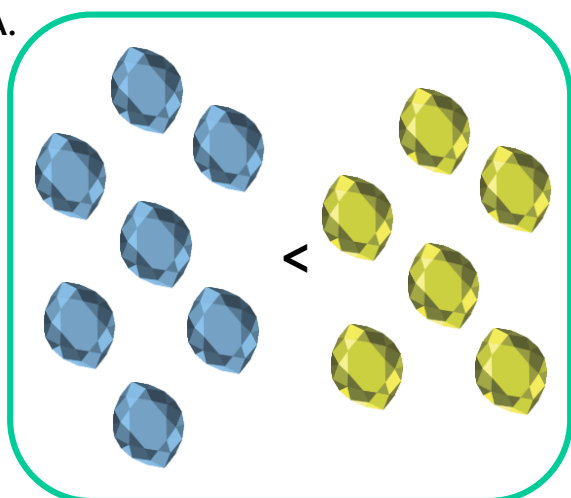
7. Draw objects on both sides to make the statement correct with no more than 10 objects on each side.



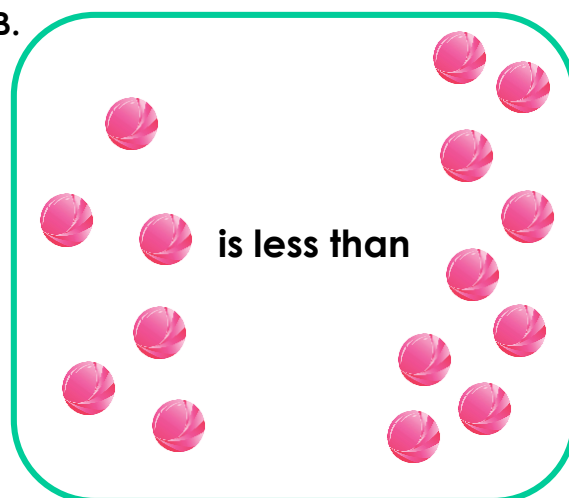
VF
HW/Ext

8. Tick the statement that is correct.

A.

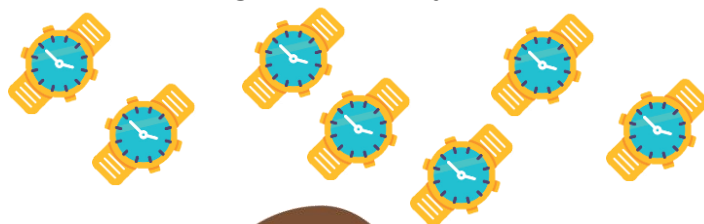


B.



VF
HW/Ext

9. Dee is looking at these objects. she says,



Ten > 7

Is she correct? Explain why.



RPS
HW/Ext

Homework/Extension

Introducing Greater Than, Less Than and Equal To

Developing

1. Children can draw up to 3 objects.
2. B
3. She is correct because 3 is less than 4.

Expected

4. Children can draw 9 or 10 objects.
5. A
6. He is not correct because 9 is greater than 6.

Greater Depth

7. Various answers, for example: $10 > 7$, which would have 5 drawn on the left and 2 drawn on the right.
8. B
9. She is correct because 10 is greater than 7.