



## Maltese Road Primary School

### NEWSLETTER FRIDAY 16<sup>ND</sup> FEBRUARY 2024

Dear Parents and Carers

It was lovely to see the children dressed in their favourite clothes for wear what you love day! Thank you to the PTA for organising this event. We raise an incredible £296. Thank you so much for your kindness in contributions.

I would like to take this opportunity for all you support this half term and would like to wish you a lovely half term.

#### Year 4 Superstars Competition

We would like to give a huge congratulations to our Year 4 class this week. They went along to Chelmsford Sports and Athletics Centre on Tuesday for the Superstars event, where they came 2<sup>nd</sup> on the day and 3<sup>rd</sup> overall out of 40 schools across Essex. An extra round of applause goes to Evie and Ruby for coming 2<sup>nd</sup> place and 3<sup>rd</sup> place respectively. Hats off to Serena for leading the Maltese Road Pledge before the sporting event. She read with confidence! Well done to everyone that took part.



#### Poetry -by- Heart

On Thursday 21<sup>st</sup> March 2024 is World Poetry Day. To celebrate this event, all children have been invited to learn and perform a short poem from our anthology or a poem of their choice. These shall initially be performed to their house teams on **Wednesday 13<sup>th</sup> March**, after which a vote will decide a performer from Reception, Key Stage 1 (Year 1 and Year 2), Lower Key Stage 2 (Year 3 and Year 4) and Upper Key Stage 2 (Year 5 and Year 6) from each house.

The live finals will take place in the hall on **Thursday 21<sup>th</sup> March**, which is world poetry day. This is an invaluable experience for children to learn a poem for life, teaching them to enjoy, share, participate and express themselves through language.

A letter will be sent out detailing the information regarding this event. The poems can be found on the children class pages on the school website.

## PE Kit Expectation

This half term we have been monitoring the school uniform and have noticed a number of children wearing the incorrect school PE uniform. Please see the list below of what should and should not be worn.

- White polo shirt with school logo or plain white t-shirt.
- Plain green shorts, or plain green or plain black tracksuit bottoms/leggings in the winter.
- Trainers (Reception class are required to wear plimsolls).
- Green school fleeces (plain green jumpers) or black plain jumper
- No slogans
- All items should be clearly named.

Thank you for your support

## Jewellery

All jewellery is forbidden for PE. This is an Essex County Council ruling to comply with safety regulations. Child must be able to remove their own earrings for PE lessons. Tape is not permitted.

## Attendance

0 days of school	100%	Perfection
Equates to 2 days off school each year	99%	Excellent
Equates to 5 days off school each year	97%	Good
Equates to 10 days off school each year	95%	Slight Concern
Equates to 20 days off school each year	90%	Concerned
Equates to 30 days off school each year	85%	Very Concerned



Cosy Reads With a chilly breeze blowing outside, get cosy with a blanket and explore these brilliant reads as the nights become a little darker... Have a look at some of these recommended reads for different age groups. They might make great presents, but you could also order them from your local library.

<https://www.worldbookday.com/reading-recommendations/cosy-reads/>



## Lockdown Practice

There is an expectation that throughout the academic year schools to carry out a Lockdown drills as well as Fire drills. Within the next few weeks, we are planning to have a Lockdown practice, before the Easter holiday. Nearer the time, a letter will be sent home regarding our lockdown practice. Please be reassured that before the practice, the children will be prepped and informed in a school assembly and class discussions, in a very child friendly manner so that there is no confusion or any child becomes frightened during the lockdown.

**Mrs White**

### Packed Lunches and Snacks

Please make sure that children who are bringing packed lunches, you are putting healthy food in them. Sandwiches/pasta/salad are a great idea, along with fruit/salad or vegetable sticks **We do not allow Frubes/tube style yogurts, nut products, bars of chocolate or packets of sweets.** Crisps or a chocolate covered biscuit are acceptable. Children have an allotted amount of time to sit and eat their packed lunches so can you please put a reasonable amount of food into lunchboxes, that your child will be able to eat within 30 minutes. **Children are not allowed to bring thermoses with hot liquids in.**



**Snack Time** – Children in Key Stage 2 can bring a healthy snack each day (fresh or dried fruit, cheese, vegetable sticks, cereal bars (without nuts) etc. No sweets, crisps, cakes or chocolate for snacks.

#### Important messages:-

- ✓ If there is a change in circumstances when collecting your child from school at the end of the day, **you must telephone the school office by 2:30pm at the latest.**
- ✓ If you need to contact your class teacher at any time please feel free to use ClassDojo, or the class email address found on our website.
- ✓ Please ensure that if your child is not attending school that you phone the school office every day of the absence on (01245) 357 860 to inform us by **9:00am.**
- ✓ Please note that any urgent messages must be contacted by telephone and not email, as these messages may not be seen until the following day.

#### Pupil Awards

##### Attendance Award:

**Fox Class**

##### Maltese Road Values

Respect

Kanistika

Resilience

Pranav, Antonia, Royce, Omar

Responsibility

Marsell

Creativity

Willow, Eliza, Raphael

Collaboration

Compassion

Courage



#### SEND Coffee Mornings

Date Coming Soon .....

Mrs Almond

## DATES FOR YOUR DIARIES:

Date	
<ul style="list-style-type: none"> <li>19<sup>th</sup> – 23<sup>rd</sup> February</li> </ul>	<ul style="list-style-type: none"> <li>Half Term</li> </ul>
<ul style="list-style-type: none"> <li>27<sup>th</sup> February</li> <li>1<sup>st</sup> March</li> <li>4<sup>th</sup> March</li> <li>5<sup>th</sup> March</li> <li>6<sup>th</sup> March</li> <li>7<sup>th</sup> March</li> <li>8<sup>th</sup> March</li> <li>11<sup>th</sup> March</li> <li>13<sup>th</sup> March</li> <li>19<sup>th</sup> March</li> <li>21<sup>st</sup> March</li> <li>26<sup>th</sup> March</li> </ul>	<ul style="list-style-type: none"> <li>Year 4 Parents Times Table Meeting – 3:05pm in the Year 4 Classroom</li> <li>Year 1 &amp; Year 3 Trip to Colchester Castle</li> <li>Book Fair - Details to Follow</li> <li>Book Fair – Details to Follow</li> <li>World Book Day Dance Workshop – All Children to Wear PE Kits to School</li> <li>PTA Wonka Bar Day – Details to Follow</li> <li>World Book Day – Details to Follow</li> <li>Class Photos</li> <li>Poetry by Heart Performance</li> <li>Year 3 &amp; 4 Easter Workshop at Chelmsford Cathedral – Details to Follow</li> <li>World Poetry Day Competition Final</li> <li>Year 3 &amp; 4 The Bee Musical Performance – Parents Invited at 9:15am – Details to Follow</li> <li>Year 3 &amp; 4 The Bee Musical Performance – Parents Invited at 9:15am – Details to Follow</li> </ul>
<ul style="list-style-type: none"> <li>27<sup>th</sup> March</li> <li>28<sup>th</sup> March</li> </ul>	<ul style="list-style-type: none"> <li>Last Day of Spring Term</li> </ul>
<ul style="list-style-type: none"> <li>29<sup>th</sup> March – 12<sup>th</sup> April</li> </ul>	<ul style="list-style-type: none"> <li>Easter Holidays</li> </ul>
<ul style="list-style-type: none"> <li>15<sup>th</sup> April</li> </ul>	<ul style="list-style-type: none"> <li>First Day of Summer Term</li> </ul>
<ul style="list-style-type: none"> <li>6<sup>th</sup> May</li> <li>27<sup>th</sup> May – 24<sup>th</sup> May</li> <li>3<sup>rd</sup> June</li> </ul>	<ul style="list-style-type: none"> <li>May Day Bank Holiday</li> <li>Half Term</li> <li>Non Pupil Day</li> </ul>
<ul style="list-style-type: none"> <li>14<sup>th</sup> June</li> <li>24<sup>th</sup> – 26<sup>th</sup> June</li> <li>10<sup>th</sup> July</li> <li>11<sup>th</sup> July</li> <li>19<sup>th</sup> July</li> <li>22<sup>nd</sup> &amp; 23<sup>rd</sup> July</li> </ul>	<ul style="list-style-type: none"> <li>Sports Day – Details to Follow</li> <li>Year 6 Residential Trip to Essex Outdoors Mersea</li> <li>Year 6 Leavers Performance – 1:30pm – Parents Invited – Details to Follow</li> <li>Year 6 Leavers Performance – 9:15am – Parents Invited – Details to Follow</li> <li>Last Day of Summer Term</li> <li>Non Pupil Day</li> </ul>

### **Nuts**

We are a nut aware school; we have children and adults with nut allergies, which could be very dangerous for them to be in contact. Please ensure that you check ingredients of all foods sent into school, even items you buy regularly, as there can be changes to ensure there are no issues.

### **P.E.**

Children must not wear any kind of jewellery in PE lessons, including watches and earrings. Our school upholds the Essex policy around earrings, which states that earrings should be removed and that taping is not a suitable substitute, as it does not reduce the risk of the back of the earring puncturing the neck. Children with medium/long hair are reminded to tie it up securely

## 2023-2024 Term Dates

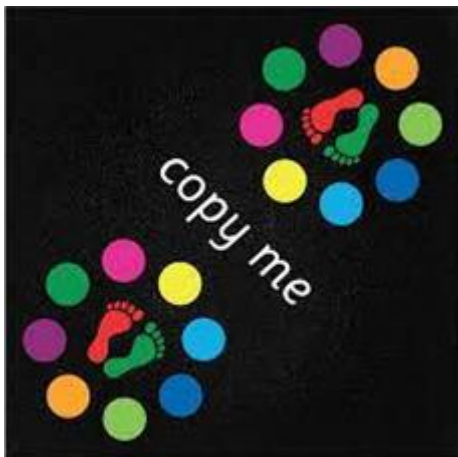
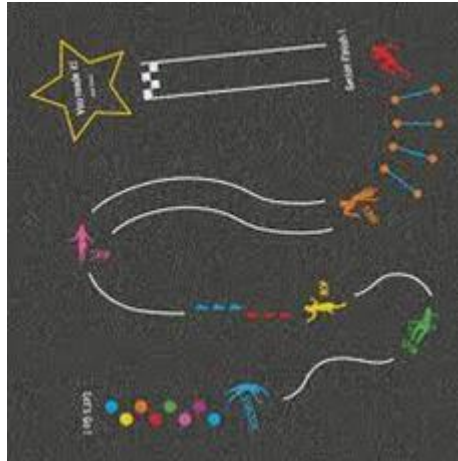
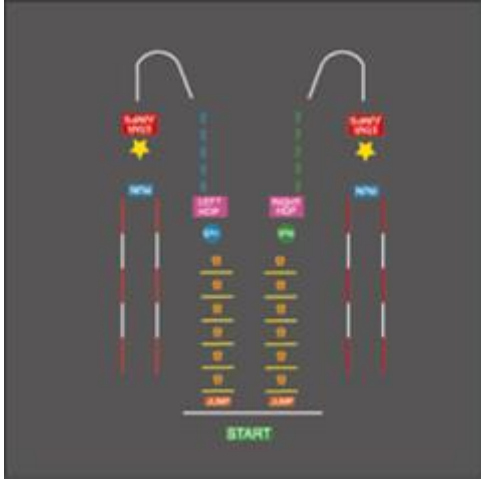
Date	
• 4 <sup>th</sup> January 2024	• First Day of Spring Term
• 19 <sup>th</sup> – 23 <sup>rd</sup> February	• February Half Term
• 28 <sup>th</sup> March	• Last Day of Spring Term
• 29 <sup>th</sup> March – 12 <sup>th</sup> April	• Easter Holidays
• 15 <sup>th</sup> April	• First Day of Summer Term
• 6 <sup>th</sup> May	• May Day Bank Holiday
• 27 <sup>th</sup> May – 31 <sup>st</sup> May	• May Half Term
• 3 <sup>rd</sup> June	• Non Pupil Day
• 19 <sup>th</sup> July	• Last Day of Summer Term
• 22 <sup>nd</sup> & 23 <sup>rd</sup> July	• Non Pupil Days

# PTA NEWS

Money raised for "wear what you love to school day" £300 (Amazing)

Money raised at last Friday's tuck shop £110.00 (Amazing)

This is going toward playground markings as below:



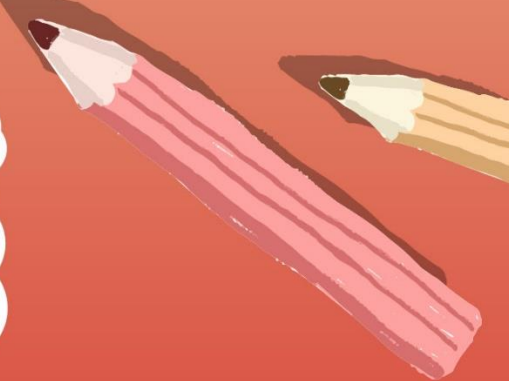
These have been ordered by the PTA and will be installed over the next 4 weeks, keep a look out on the playground for them.

Thank you for all your support

## Dates for your Diary

Maltese Road Wonka Bar Day  
PTA AGM meeting  
Easter Design Competition  
Easter Bonnet Competition  
Easter Egg Hunt  
Parent/Carer celebration BBQ  
Adult Only Quiz night  
Summer Event  
Year 6 Prom

Thursday 7th March  
Friday 15th March (9.30am-10.30am)  
Thursday 28th March  
Thursday 28th March  
Thursday 28th March  
Friday 14th June (6pm-8pm)  
Friday 26<sup>th</sup> April 9 (times to be confirmed)  
Saturday 6th July  
Thursday 18th July (6pm-8pm)



# HALF TERM FUN THIS FEBRUARY

TECH ROOM • DODGEBALL • FOOTBALL • DECORATION MAKING  
ARTS & CRAFTS • SILENT DISCO • PLUS MUCH MORE!



**Monday Chancellor Park, Chelmsford AND Maylandsea, Maldon**

**Tuesday Meadgate, Chelmsford**

**Wednesday Maltese Road, Chelmsford**

**Thursday Purleigh (Maldon) AND St Luke's Park (Runwell)**

**Friday Elmwood (South Woodham Ferrers)**

Childcare Available 9-3pm | £32 per child

**Book online:** [www.essexkidscamp.co.uk/activities](http://www.essexkidscamp.co.uk/activities)

**Email:** [info@essexkidscamp.co.uk](mailto:info@essexkidscamp.co.uk)



@Essex Kids Camp

