



# Maltese Road Primary School

## NEWSLETTER FRIDAY 2<sup>ND</sup> FEBRUARY 2024

Dear Parents and Carers



### Lockdown Practice

There is an expectation that throughout the academic year schools to carry out a Lockdown drills as well as Fire drills. Within the next few weeks, we are planning to have a Lockdown practice, before the Easter holiday. Nearer the time, a letter will be sent home regarding our lockdown practice. Please be reassured that before the practice, the children will be prepped and informed in a school assembly and class discussions, in a very child friendly manner so that there is no confusion or any child becomes frightened during the lockdown.

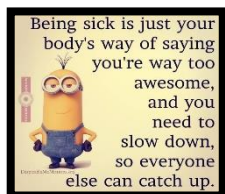
**Key Stage 1 Pants, Socks, Knickers** – We seem to have run out of our school supply of spare knickers, socks and pants. If your child has been sent home in spares, could you please wash and return them as soon as possible.

### Attendance

Pupils with good attendance generally achieve more and enjoy school more. As you know having a good education will help to give your child the best possible start in life and regular school attendance patterns encourage the development of other responsible patterns of behaviour. If your child is not in school regularly, they will find it difficult to keep up with the work and then may not want to be in school more, causing upset in some cases. We know that some absence from school is unavoidable or due to unusual circumstances. Illness in young children can be unavoidable and if they are really not well enough to be in school, they should be at home, but it can be surprising how a number of small absences can build up to quite a considerable amount of time throughout the year.

0 days of school	100%	Perfection
Equates to 2 days off school each year	99%	Excellent
Equates to 5 days off school each year	97%	Good
Equates to 10 days off school each year	95%	Slight Concern
Equates to 20 days off school each year	90%	Concerned
Equates to 30 days off school each year	85%	Very Concerned

We will be shortly sending out letters to some families regarding attendance, where we have concerns that your child/ren are not in school as regularly as they should be, or have long periods of recorded absence. This will enable us to work together to support families to ensure that children are able to attend as regularly as possible. Please note that this is a legal requirement for schools to monitor attendance closely and the letters that will be going out are standard, formal letters that we are obliged to send, from the local authority.



### Is My Child Too Ill For School?

There are times when we all feel under the weather and children are no different. As adults we know how we feel and from experience will also be able to make a decision about what our day entails and if we will be able to manage. Sometimes if you get up and get going you feel better, other times getting going isn't an option. Children can't always explain how they feel so it can be difficult to determine if they really are too poorly for normal activities and we often have parents calling into the office to ask us what we would advise. If you are not sure if your child should be in school, the NHS have produced a very helpful guide for reference which will help you in making the decision. As always, we will let you know if they struggle during the day and need to go home. Please click here for the guide. <https://www.nhs.uk/live-well/is-my-child-too-ill-for-school/>

### Remember

**Parent Teacher Consultations – Wednesday 7<sup>th</sup> and Thursday 8<sup>th</sup> February.**

Appointments are now available to book up until Monday 5<sup>th</sup> February. You will find the booking system on our school website under Parents, Parents Evening Booking System. When logging in please make sure you use the email address that you receive school communications to, and your child's details as held by the school.

**Mrs White**

### Important messages:-

- ✓ If there is a change in circumstances when collecting your child from school at the end of the day, **you must telephone the school office by 2:30pm at the latest.**
- ✓ If you need to contact your class teacher at any time please feel free to use ClassDojo, or the class email address found on our website.
- ✓ Please ensure that if your child is not attending school that you phone the school office every day of the absence on (01245) 357 860 to inform us by **9:00am.**
- ✓ Please note that any urgent messages must be contacted by telephone and not email, as these messages may not be seen until the following day.

### Pupil Awards

**Attendance Award:**

**Dragonfly Class**

### Maltese Road Values

Respect

Resilience

Responsibility

Creativity

Collaboration

Compassion

Courage

Krishna, Shri, Alistair

Shrisanth

Ezra, Layla, Poppy



## **SEND Coffee Mornings**

We had another great turn out this week for our SEND coffee morning. It was great to have so many great guest speakers and agencies attend:

**Kirsty Roberts** from **Community Engagement Worker- Chelmsford District Essex Child and Family Wellbeing Service**, who discussed local SEND services that are available and showed some great SEND resources that are available.

**Daniel Hall** from **SENDSensation** gave a short talk about what they offer in regards to short breaks, activities and clubs and how to access their support.

**Wendy and Jody** from **Autism Central** came to discuss services they offer and were around to share lived experiences and support.

**Orla** from **Families in Focus** discussed the brilliant support they offer.

I will add information they discussed onto the school website under SEND Resources. Keep looking out for upcoming events and information on the weekly newsletter.

Mrs Almond

## DATES FOR YOUR DIARIES:

Date	
<ul style="list-style-type: none"> <li>7<sup>th</sup> February</li> </ul>	<ul style="list-style-type: none"> <li>Parents Evening – 3:30pm – 6:30pm</li> </ul>
<ul style="list-style-type: none"> <li>8<sup>th</sup> February</li> </ul>	<ul style="list-style-type: none"> <li>Parents Evening – 3:30pm – 6:30pm</li> </ul>
<ul style="list-style-type: none"> <li>19<sup>th</sup> – 23<sup>rd</sup> February</li> </ul>	<ul style="list-style-type: none"> <li>Half Term</li> </ul>
<ul style="list-style-type: none"> <li>27<sup>th</sup> February</li> </ul>	<ul style="list-style-type: none"> <li>Year 4 Parents Times Table Meeting – 3:05pm in the Year 4 Classroom</li> </ul>
<ul style="list-style-type: none"> <li>1<sup>st</sup> March</li> </ul>	<ul style="list-style-type: none"> <li>Year 1 &amp; Year 3 Trip to Colchester Castle – Details to Follow</li> </ul>
<ul style="list-style-type: none"> <li>4<sup>th</sup> March</li> </ul>	<ul style="list-style-type: none"> <li>Book Fair - Details to Follow</li> </ul>
<ul style="list-style-type: none"> <li>5<sup>th</sup> March</li> </ul>	<ul style="list-style-type: none"> <li>Book Fair – Details to Follow</li> </ul>
<ul style="list-style-type: none"> <li>6<sup>th</sup> March</li> </ul>	<ul style="list-style-type: none"> <li>World Book Day Dance Workshop – All Children to Wear PE Kits to School</li> </ul>
<ul style="list-style-type: none"> <li>8<sup>th</sup> March</li> </ul>	<ul style="list-style-type: none"> <li>World Book Day – Details to Follow</li> </ul>
<ul style="list-style-type: none"> <li>19<sup>th</sup> March</li> </ul>	<ul style="list-style-type: none"> <li>Year 3 &amp; 4 Easter Workshop at Chelmsford Cathedral – Details to Follow</li> </ul>
<ul style="list-style-type: none"> <li>26<sup>th</sup> March</li> </ul>	<ul style="list-style-type: none"> <li>Year 3 &amp; 4 The Bee Musical Performance – Parents Invited at 9:15am – Details to Follow</li> </ul>
<ul style="list-style-type: none"> <li>27<sup>th</sup> March</li> </ul>	<ul style="list-style-type: none"> <li>Year 3 &amp; 4 The Bee Musical Performance – Parents Invited at 9:15am – Details to Follow</li> </ul>
<ul style="list-style-type: none"> <li>28<sup>th</sup> March</li> </ul>	<ul style="list-style-type: none"> <li>Last Day of Spring Term</li> </ul>
<ul style="list-style-type: none"> <li>29<sup>th</sup> March – 12<sup>th</sup> April</li> </ul>	<ul style="list-style-type: none"> <li>Easter Holidays</li> </ul>
<ul style="list-style-type: none"> <li>15<sup>th</sup> April</li> </ul>	<ul style="list-style-type: none"> <li>First Day of Summer Term</li> </ul>
<ul style="list-style-type: none"> <li>6<sup>th</sup> May</li> </ul>	<ul style="list-style-type: none"> <li>May Day Bank Holiday</li> </ul>
<ul style="list-style-type: none"> <li>27<sup>th</sup> May – 24<sup>th</sup> May</li> </ul>	<ul style="list-style-type: none"> <li>Half Term</li> </ul>
<ul style="list-style-type: none"> <li>3<sup>rd</sup> June</li> </ul>	<ul style="list-style-type: none"> <li>Non Pupil Day</li> </ul>
<ul style="list-style-type: none"> <li>14<sup>th</sup> June</li> </ul>	<ul style="list-style-type: none"> <li>Sports Day – Details to Follow</li> </ul>
<ul style="list-style-type: none"> <li>24<sup>th</sup> – 26<sup>th</sup> June</li> </ul>	<ul style="list-style-type: none"> <li>Year 6 Residential Trip to Essex Outdoors Mersea</li> </ul>
<ul style="list-style-type: none"> <li>10<sup>th</sup> July</li> </ul>	<ul style="list-style-type: none"> <li>Year 6 Leavers Performance – 1:30pm – Parents Invited – Details to Follow</li> </ul>
<ul style="list-style-type: none"> <li>11<sup>th</sup> July</li> </ul>	<ul style="list-style-type: none"> <li>Year 6 Leavers Performance – 9:15am – Parents Invited – Details to Follow</li> </ul>
<ul style="list-style-type: none"> <li>19<sup>th</sup> July</li> </ul>	<ul style="list-style-type: none"> <li>Last Day of Summer Term</li> </ul>
<ul style="list-style-type: none"> <li>22<sup>nd</sup> &amp; 23<sup>rd</sup> July</li> </ul>	<ul style="list-style-type: none"> <li>Non Pupil Day</li> </ul>

### Nuts

We are a nut aware school; we have children and adults with nut allergies, which could be very dangerous for them to be in contact. Please ensure that you check ingredients of all foods sent into school, even items you buy regularly, as there can be changes to ensure there are no issues.

### Natasha's Law and Birthday Treats



If you are sending treats in for classmates to celebrate a birthday, please ensure that each individual packet has clearly labelled ingredients. If that is not the case, we will sadly have to return the treats to you as we will be unable to give them out under Natasha's Law. Alternatively, purchase a fabulous book for the children to enjoy and keep in their classroom in honour of the birthday. Suggested books for your child's age are listed on the class pages of our website.

### P.E.

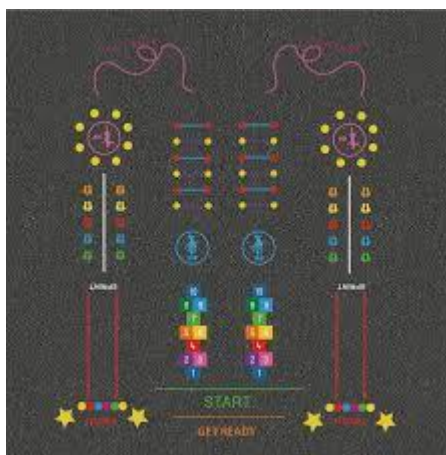
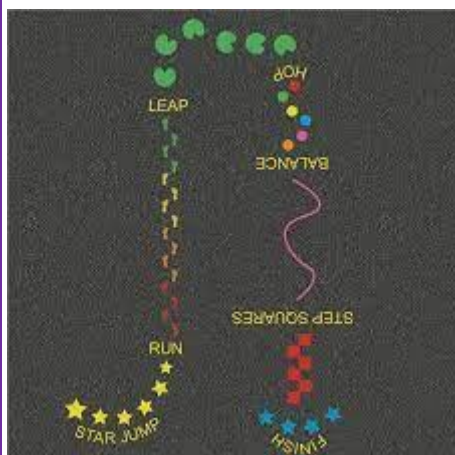
Children must not wear any kind of jewellery in PE lessons, including watches and earrings. Our school upholds the Essex policy around earrings, which states that earrings should be removed and that taping is not a suitable substitute, as it does not reduce the risk of the back of the earring puncturing the neck. Children with medium/long hair are reminded to tie it up securely

## 2023-2024 Term Dates

Date	
• 4 <sup>th</sup> January 2024	• First Day of Spring Term
• 19 <sup>th</sup> – 23 <sup>rd</sup> February	• February Half Term
• 28 <sup>th</sup> March	• Last Day of Spring Term
• 29 <sup>th</sup> March – 12 <sup>th</sup> April	• Easter Holidays
• 15 <sup>th</sup> April	• First Day of Summer Term
• 6 <sup>th</sup> May	• May Day Bank Holiday
• 27 <sup>th</sup> May – 31 <sup>st</sup> May	• May Half Term
• 3 <sup>rd</sup> June	• Non Pupil Day
• 19 <sup>th</sup> July	• Last Day of Summer Term
• 22 <sup>nd</sup> & 23 <sup>rd</sup> July	• Non Pupil Days

## PTA NEWS

This term we are raising money to put new activity markings on the school playground. Please see examples below:

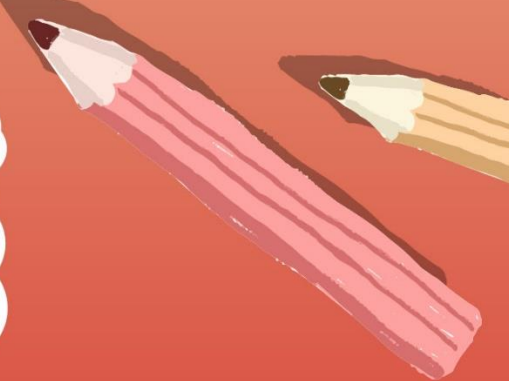


Once the actual designs have been chosen we will let you know.

### Dates for your Diary

Wear what you love to school  
 Maltese Road Wonka Bar Day  
 PTA AGM meeting  
 Easter Design Competition  
 Easter Bonnet Competition  
 Easter Egg Hunt  
 Parent/Carer celebration BBQ  
 Summer Event  
 Year 6 Prom  
 Adult Quiz night

Friday 16th February  
 Thursday 7th March  
 Friday 15th March (9.30am-10.30am)  
 Thursday 28th March  
 Thursday 28th March  
 Thursday 28th March  
 Friday 14th June (6pm-8pm)  
 Saturday 6th July  
 Thursday 18th July (6pm-8pm)  
 Date to be confirmed



# HALF TERM FUN THIS FEBRUARY

TECH ROOM • DODGEBALL • FOOTBALL • DECORATION MAKING  
ARTS & CRAFTS • SILENT DISCO • PLUS MUCH MORE!



**Monday Chancellor Park, Chelmsford AND Maylandsea, Maldon**

**Tuesday Meadgate, Chelmsford**

**Wednesday Maltese Road, Chelmsford**

**Thursday Purleigh (Maldon) AND St Luke's Park (Runwell)**

**Friday Elmwood (South Woodham Ferrers)**

Childcare Available 9-3pm | £32 per child

**Book online:** [www.essexkidscamp.co.uk/activities](http://www.essexkidscamp.co.uk/activities)

**Email:** [info@essexkidscamp.co.uk](mailto:info@essexkidscamp.co.uk)



@Essex Kids Camp



PLEASE JOIN US FOR

# SHROVE TUESDAY

February 13th from 3pm

@ THE CHURCH OF THE ASCENSION WITH ALL SAINTS,  
MALTESE RD, ESSEX, CM1 2PB



May your  
Shrove Tuesday be  
filled with joy, lots of  
laughter, and many  
yummy pancakes!

Come and  
find our more  
about your  
local church

## EVERYONE IS WELCOME!

