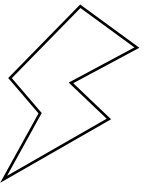
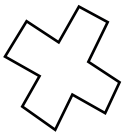


NAME: _____

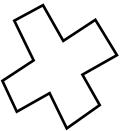
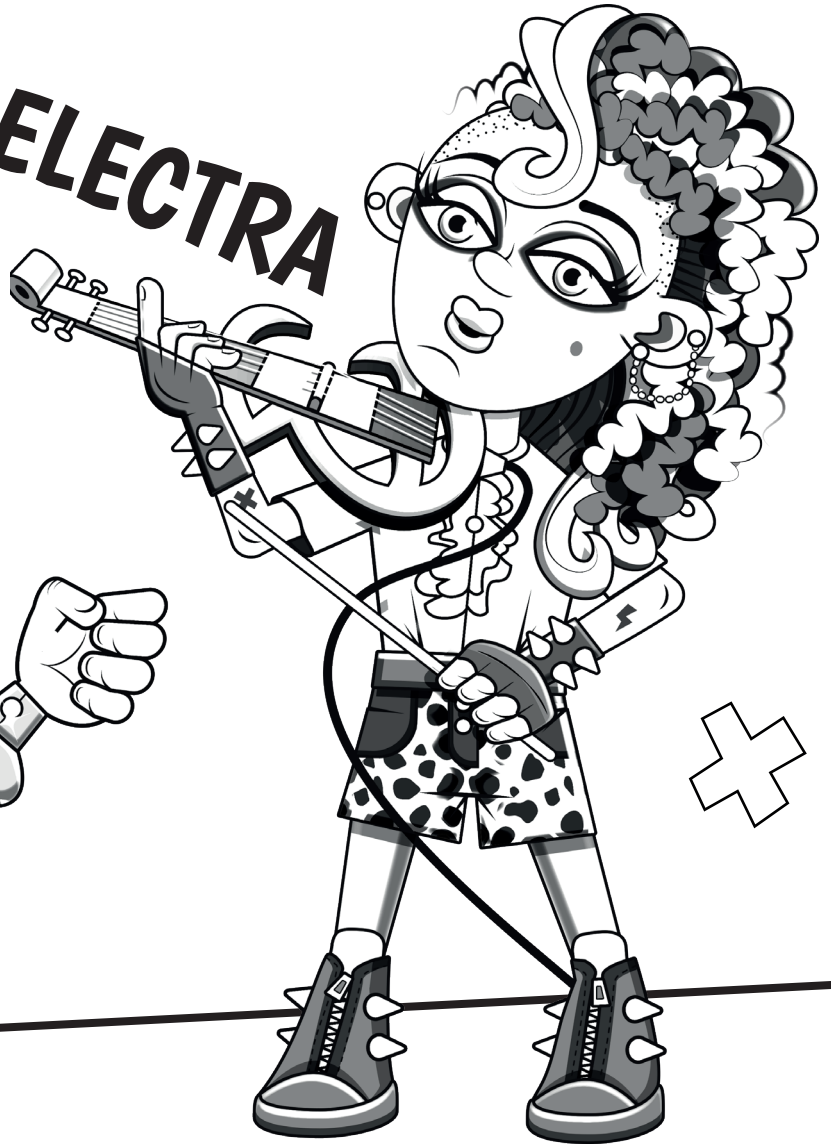
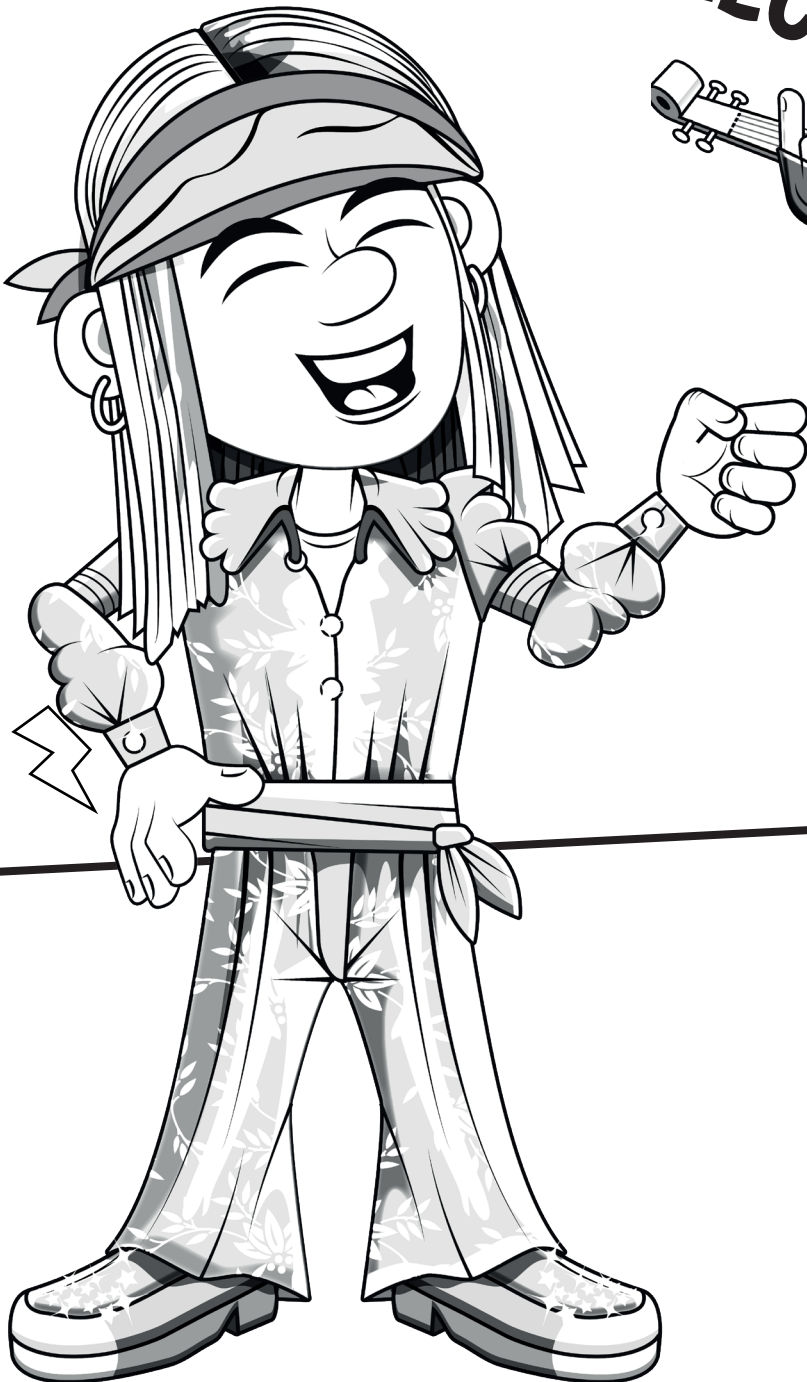


11s 12s



AIR

ELECTRA



SCORE

BASELINE

CHECK 1

CHECK 2



BASELINE



Name: _____

Date: _____

1. $11 \times 6 = [66]$

21. $12 \times 3 = [36]$

41. $108 \div 12 = [9]$

2. $12 \times 11 = [132]$

22. $12 \times 8 = [96]$

42. $22 \div 2 = [11]$

3. $10 \times 12 = [120]$

23. $12 \times 10 = [120]$

43. $144 \div 12 = [12]$

4. $11 \times 7 = [77]$

24. $11 \times 11 = [121]$

44. $96 \div 8 = [12]$

5. $11 \times 6 = [66]$

25. $4 \times 12 = [48]$

45. $132 \div 12 = [11]$

6. $3 \times 12 = [36]$

26. $11 \times 10 = [110]$

46. $120 \div 12 = [10]$

7. $8 \times 11 = [88]$

27. $4 \times 11 = [44]$

47. $48 \div 4 = [12]$

8. $11 \times 7 = [77]$

28. $11 \times 7 = [77]$

48. $48 \div 12 = [4]$

9. $11 \times 12 = [132]$

29. $12 \times 10 = [120]$

49. $33 \div 11 = [3]$

10. $12 \times 1 = [12]$

30. $12 \times 8 = [96]$

50. $48 \div 12 = [4]$

11. $11 \times 6 = [66]$

31. $12 \times 8 = [96]$

51. $108 \div 9 = [12]$

12. $8 \times 12 = [96]$

32. $120 \div 10 = [12]$

52. $132 \div 11 = [12]$

13. $1 \times 12 = [12]$

33. $132 \div 11 = [12]$

53. $88 \div 8 = [11]$

14. $12 \times 11 = [132]$

34. $33 \div 3 = [11]$

54. $33 \div 11 = [3]$

15. $12 \times 8 = [96]$

35. $144 \div 12 = [12]$

55. $11 \div 1 = [11]$

16. $6 \times 12 = [72]$

36. $132 \div 11 = [12]$

56. $55 \div 5 = [11]$

17. $4 \times 11 = [44]$

37. $132 \div 11 = [12]$

57. $66 \div 11 = [6]$

18. $5 \times 12 = [60]$

38. $12 \div 1 = [12]$

58. $88 \div 11 = [8]$

19. $5 \times 12 = [60]$

39. $144 \div 12 = [12]$

59. $48 \div 4 = [12]$

20. $2 \times 11 = [22]$

40. $88 \div 11 = [8]$

60. $33 \div 11 = [3]$

SCORE:
(5 minute limit)

/60

TIME TAKEN (optional)

MINUTES SECONDS



Name: _____

Date: _____

MULTIPLICATION 1

Testing 11, 12

1. $10 \times 11 = [110]$

2. $11 \times 12 = [132]$

3. $5 \times 11 = [55]$

4. $11 \times 1 = [11]$

5. $6 \times 12 = [72]$

6. $9 \times 11 = [99]$

7. $6 \times 12 = [72]$

8. $12 \times 5 = [60]$

9. $7 \times 12 = [84]$

10. $1 \times 11 = [11]$

11. $11 \times 7 = [77]$

12. $12 \times 12 = [144]$

13. $12 \times 9 = [108]$

14. $11 \times 1 = [11]$

15. $7 \times 12 = [84]$

16. $6 \times 11 = [66]$

17. $1 \times 11 = [11]$

18. $12 \times 4 = [48]$

19. $12 \times 5 = [60]$

20. $1 \times 11 = [11]$

21. $4 \times 12 = [48]$

22. $10 \times 11 = [110]$

23. $6 \times 12 = [72]$

24. $9 \times 12 = [108]$

25. $1 \times 12 = [12]$

26. $12 \times 6 = [72]$

27. $11 \times 3 = [33]$

28. $8 \times 11 = [88]$

29. $2 \times 11 = [22]$

30. $11 \times 11 = [121]$

31. $7 \times 12 = [84]$

32. $2 \times 11 = [22]$

33. $11 \times 3 = [33]$

34. $12 \times 1 = [12]$

35. $11 \times 11 = [121]$

36. $12 \times 1 = [12]$

37. $10 \times 11 = [110]$

38. $12 \times 9 = [108]$

39. $12 \times 11 = [132]$

40. $12 \times 2 = [24]$

41. $11 \times 6 = [66]$

42. $11 \times 3 = [33]$

43. $11 \times 4 = [44]$

44. $12 \times 4 = [48]$

45. $2 \times 11 = [22]$

46. $12 \times 12 = [144]$

47. $3 \times 12 = [36]$

48. $11 \times 10 = [110]$

49. $12 \times 4 = [48]$

50. $4 \times 12 = [48]$

51. $12 \times 3 = [36]$

52. $11 \times 9 = [99]$

53. $5 \times 11 = [55]$

54. $11 \times 7 = [77]$

55. $3 \times 12 = [36]$

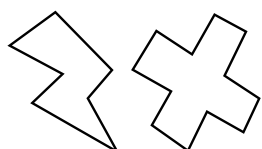
56. $11 \times 12 = [132]$

57. $9 \times 11 = [99]$

58. $9 \times 12 = [108]$

59. $8 \times 11 = [88]$

60. $11 \times 11 = [121]$



SCORE:

Grown-ups:
Can learners spot links
between neighbouring
questions?



Name: _____

Date: _____

MISSING NUMBER 1

Testing 11, 12

1. $[9] \times 11 = 99$

2. $[8] \times 12 = 96$

3. $6 \times [11] = 66$

4. $12 \times [8] = 96$

5. $12 \times [8] = 96$

6. $12 \times [10] = 120$

7. $[2] \times 11 = 22$

8. $9 \times [11] = 99$

9. $12 \times [11] = 132$

10. $10 \times [11] = 110$

11. $2 \times [11] = 22$

12. $[11] \times 11 = 121$

13. $10 \times [11] = 110$

14. $[6] \times 12 = 72$

15. $3 \times [12] = 36$

16. $11 \times [7] = 77$

17. $[11] \times 6 = 66$

18. $[9] \times 12 = 108$

19. $[11] \times 12 = 132$

20. $12 \times [11] = 132$

21. $[6] \times 11 = 66$

22. $9 \times [12] = 108$

23. $[2] \times 12 = 24$

24. $[11] \times 5 = 55$

25. $[12] \times 10 = 120$

26. $12 \times [1] = 12$

27. $[3] \times 11 = 33$

28. $[12] \times 11 = 132$

29. $[12] \times 12 = 144$

30. $[11] \times 4 = 44$

31. $[12] \times 12 = 144$

32. $[3] \times 11 = 33$

33. $[8] \times 11 = 88$

34. $10 \times [11] = 110$

35. $[12] \times 2 = 24$

36. $1 \times [11] = 11$

37. $[12] \times 12 = 144$

38. $7 \times [12] = 84$

39. $[9] \times 12 = 108$

40. $4 \times [11] = 44$

41. $[11] \times 8 = 88$

42. $10 \times [11] = 110$

43. $[12] \times 8 = 96$

44. $11 \times [4] = 44$

45. $12 \times [4] = 48$

46. $11 \times [5] = 55$

47. $8 \times [12] = 96$

48. $[12] \times 4 = 48$

49. $[11] \times 11 = 121$

50. $11 \times [5] = 55$

51. $[11] \times 8 = 88$

52. $[12] \times 12 = 144$

53. $[11] \times 7 = 77$

54. $[2] \times 12 = 24$

55. $[12] \times 4 = 48$

56. $[2] \times 12 = 24$

57. $7 \times [11] = 77$

58. $8 \times [11] = 88$

59. $[11] \times 8 = 88$

60. $11 \times [4] = 44$



SCORE:

Grown-ups:
Can learners spot links between neighbouring questions?



Name: _____

Date: _____

DIVISION 1

Testing 11, 12

1. $33 \div 11 = [3]$

21. $36 \div 12 = [3]$

41. $84 \div 7 = [12]$

2. $132 \div 11 = [12]$

22. $84 \div 7 = [12]$

42. $60 \div 5 = [12]$

3. $11 \div 1 = [11]$

23. $36 \div 3 = [12]$

43. $11 \div 11 = [1]$

4. $96 \div 8 = [12]$

24. $96 \div 8 = [12]$

44. $121 \div 11 = [11]$

5. $121 \div 11 = [11]$

25. $84 \div 12 = [7]$

45. $88 \div 11 = [8]$

6. $66 \div 11 = [6]$

26. $132 \div 12 = [11]$

46. $60 \div 12 = [5]$

7. $60 \div 12 = [5]$

27. $132 \div 12 = [11]$

47. $132 \div 11 = [12]$

8. $77 \div 7 = [11]$

28. $55 \div 5 = [11]$

48. $33 \div 11 = [3]$

9. $108 \div 9 = [12]$

29. $132 \div 11 = [12]$

49. $120 \div 10 = [12]$

10. $121 \div 11 = [11]$

30. $66 \div 11 = [6]$

50. $96 \div 8 = [12]$

11. $120 \div 10 = [12]$

31. $48 \div 12 = [4]$

51. $108 \div 12 = [9]$

12. $84 \div 7 = [12]$

32. $144 \div 12 = [12]$

52. $132 \div 12 = [11]$

13. $55 \div 11 = [5]$

33. $121 \div 11 = [11]$

53. $24 \div 2 = [12]$

14. $99 \div 9 = [11]$

34. $44 \div 4 = [11]$

54. $36 \div 12 = [3]$

15. $121 \div 11 = [11]$

35. $96 \div 8 = [12]$

55. $96 \div 12 = [8]$

16. $33 \div 11 = [3]$

36. $72 \div 12 = [6]$

56. $24 \div 12 = [2]$

17. $66 \div 11 = [6]$

37. $60 \div 12 = [5]$

57. $66 \div 11 = [6]$

18. $108 \div 9 = [12]$

38. $132 \div 12 = [11]$

58. $72 \div 6 = [12]$

19. $121 \div 11 = [11]$

39. $99 \div 11 = [9]$

59. $132 \div 11 = [12]$

20. $48 \div 12 = [4]$

40. $99 \div 11 = [9]$

60. $144 \div 12 = [12]$



SCORE:

Grown-ups:
Can learners spot links
between neighbouring
questions?





CHECK 1



Name: _____

Date: _____

1. $8 \times 12 = [96]$

21. $11 \times 7 = [77]$

41. $99 \div 9 = [11]$

2. $8 \times 12 = [96]$

22. $12 \times 1 = [12]$

42. $96 \div 12 = [8]$

3. $11 \times 10 = [110]$

23. $11 \times 11 = [121]$

43. $88 \div 8 = [11]$

4. $3 \times 11 = [33]$

24. $10 \times 12 = [120]$

44. $120 \div 10 = [12]$

5. $9 \times 12 = [108]$

25. $10 \times 11 = [110]$

45. $132 \div 12 = [11]$

6. $12 \times 9 = [108]$

26. $8 \times 12 = [96]$

46. $24 \div 12 = [2]$

7. $11 \times 1 = [11]$

27. $11 \times 7 = [77]$

47. $132 \div 11 = [12]$

8. $12 \times 1 = [12]$

28. $12 \times 9 = [108]$

48. $11 \div 1 = [11]$

9. $4 \times 11 = [44]$

29. $3 \times 11 = [33]$

49. $99 \div 9 = [11]$

10. $5 \times 12 = [60]$

30. $12 \times 12 = [144]$

50. $84 \div 12 = [7]$

11. $9 \times 11 = [99]$

31. $12 \times 9 = [108]$

51. $36 \div 3 = [12]$

12. $11 \times 11 = [121]$

32. $72 \div 6 = [12]$

52. $33 \div 3 = [11]$

13. $12 \times 5 = [60]$

33. $48 \div 4 = [12]$

53. $12 \div 1 = [12]$

14. $3 \times 12 = [36]$

34. $55 \div 11 = [5]$

54. $33 \div 3 = [11]$

15. $12 \times 5 = [60]$

35. $84 \div 12 = [7]$

55. $72 \div 6 = [12]$

16. $4 \times 11 = [44]$

36. $144 \div 12 = [12]$

56. $12 \div 1 = [12]$

17. $3 \times 12 = [36]$

37. $33 \div 3 = [11]$

57. $110 \div 11 = [10]$

18. $5 \times 12 = [60]$

38. $55 \div 11 = [5]$

58. $22 \div 11 = [2]$

19. $6 \times 12 = [72]$

39. $120 \div 10 = [12]$

59. $77 \div 7 = [11]$

20. $1 \times 11 = [11]$

40. $24 \div 2 = [12]$

60. $99 \div 9 = [11]$

SCORE:
(5 minute limit)

/60

TIME TAKEN (optional)

MINUTES SECONDS



Name: _____

Date: _____

MULTIPLICATION 2

Testing 11, 12

1. $11 \times 12 = [132]$

2. $9 \times 12 = [108]$

3. $11 \times 4 = [44]$

4. $7 \times 12 = [84]$

5. $3 \times 12 = [36]$

6. $12 \times 7 = [84]$

7. $12 \times 12 = [144]$

8. $11 \times 7 = [77]$

9. $12 \times 11 = [132]$

10. $12 \times 10 = [120]$

11. $12 \times 8 = [96]$

12. $11 \times 3 = [33]$

13. $12 \times 7 = [84]$

14. $7 \times 11 = [77]$

15. $5 \times 12 = [60]$

16. $12 \times 1 = [12]$

17. $11 \times 12 = [132]$

18. $12 \times 12 = [144]$

19. $1 \times 12 = [12]$

20. $8 \times 12 = [96]$

21. $5 \times 11 = [55]$

22. $11 \times 11 = [121]$

23. $11 \times 12 = [132]$

24. $12 \times 12 = [144]$

25. $11 \times 1 = [11]$

26. $12 \times 2 = [24]$

27. $3 \times 11 = [33]$

28. $8 \times 11 = [88]$

29. $5 \times 12 = [60]$

30. $12 \times 2 = [24]$

31. $7 \times 12 = [84]$

32. $11 \times 11 = [121]$

33. $6 \times 12 = [72]$

34. $1 \times 12 = [12]$

35. $11 \times 12 = [132]$

36. $2 \times 11 = [22]$

37. $11 \times 3 = [33]$

38. $10 \times 12 = [120]$

39. $3 \times 12 = [36]$

40. $1 \times 12 = [12]$

41. $9 \times 12 = [108]$

42. $4 \times 12 = [48]$

43. $3 \times 11 = [33]$

44. $11 \times 4 = [44]$

45. $10 \times 11 = [110]$

46. $11 \times 7 = [77]$

47. $2 \times 12 = [24]$

48. $12 \times 9 = [108]$

49. $12 \times 9 = [108]$

50. $11 \times 11 = [121]$

51. $9 \times 11 = [99]$

52. $12 \times 8 = [96]$

53. $8 \times 12 = [96]$

54. $12 \times 10 = [120]$

55. $11 \times 6 = [66]$

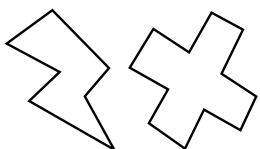
56. $5 \times 11 = [55]$

57. $11 \times 9 = [99]$

58. $1 \times 11 = [11]$

59. $1 \times 12 = [12]$

60. $5 \times 12 = [60]$



SCORE:

Grown-ups:
Can learners spot links
between neighbouring
questions?



Name: _____

Date: _____

MISSING NUMBER 2

Testing 11, 12

1. $[8] \times 12 = 96$

2. $[12] \times 6 = 72$

3. $12 \times [10] = 120$

4. $6 \times [12] = 72$

5. $7 \times [12] = 84$

6. $[12] \times 5 = 60$

7. $7 \times [12] = 84$

8. $5 \times [11] = 55$

9. $11 \times [12] = 132$

10. $[12] \times 4 = 48$

11. $[2] \times 11 = 22$

12. $8 \times [12] = 96$

13. $[12] \times 10 = 120$

14. $3 \times [12] = 36$

15. $[11] \times 6 = 66$

16. $11 \times [7] = 77$

17. $2 \times [12] = 24$

18. $5 \times [11] = 55$

19. $[8] \times 12 = 96$

20. $[11] \times 5 = 55$

21. $[2] \times 12 = 24$

22. $11 \times [9] = 99$

23. $[11] \times 8 = 88$

24. $[12] \times 8 = 96$

25. $[3] \times 12 = 36$

26. $[7] \times 12 = 84$

27. $12 \times [2] = 24$

28. $12 \times [5] = 60$

29. $11 \times [12] = 132$

30. $[12] \times 1 = 12$

31. $[10] \times 12 = 120$

32. $[11] \times 11 = 121$

33. $12 \times [11] = 132$

34. $4 \times [11] = 44$

35. $[2] \times 11 = 22$

36. $[11] \times 3 = 33$

37. $[12] \times 2 = 24$

38. $11 \times [2] = 22$

39. $9 \times [12] = 108$

40. $[11] \times 4 = 44$

41. $11 \times [5] = 55$

42. $12 \times [5] = 60$

43. $5 \times [12] = 60$

44. $11 \times [8] = 88$

45. $11 \times [7] = 77$

46. $12 \times [1] = 12$

47. $[6] \times 12 = 72$

48. $[6] \times 12 = 72$

49. $[12] \times 3 = 36$

50. $12 \times [8] = 96$

51. $4 \times [11] = 44$

52. $12 \times [12] = 144$

53. $4 \times [11] = 44$

54. $5 \times [12] = 60$

55. $1 \times [12] = 12$

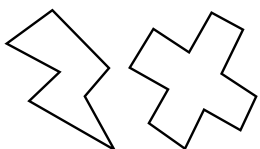
56. $4 \times [12] = 48$

57. $[9] \times 12 = 108$

58. $7 \times [12] = 84$

59. $11 \times [5] = 55$

60. $[12] \times 8 = 96$



SCORE:

Grown-ups:
Can learners spot links
between neighbouring
questions?



Name: _____

Date: _____

DIVISION 2

Testing 11, 12

1. $121 \div 11 = [11]$

2. $84 \div 12 = [7]$

3. $24 \div 2 = [12]$

4. $72 \div 6 = [12]$

5. $132 \div 12 = [11]$

6. $33 \div 11 = [3]$

7. $77 \div 7 = [11]$

8. $12 \div 12 = [1]$

9. $36 \div 12 = [3]$

10. $132 \div 11 = [12]$

11. $72 \div 6 = [12]$

12. $36 \div 12 = [3]$

13. $44 \div 11 = [4]$

14. $132 \div 12 = [11]$

15. $12 \div 12 = [1]$

16. $55 \div 5 = [11]$

17. $72 \div 6 = [12]$

18. $120 \div 10 = [12]$

19. $60 \div 5 = [12]$

20. $77 \div 11 = [7]$

21. $132 \div 11 = [12]$

22. $24 \div 2 = [12]$

23. $84 \div 12 = [7]$

24. $84 \div 12 = [7]$

25. $88 \div 8 = [11]$

26. $121 \div 11 = [11]$

27. $120 \div 12 = [10]$

28. $84 \div 12 = [7]$

29. $36 \div 12 = [3]$

30. $99 \div 11 = [9]$

31. $12 \div 1 = [12]$

32. $88 \div 11 = [8]$

33. $12 \div 12 = [1]$

34. $144 \div 12 = [12]$

35. $66 \div 6 = [11]$

36. $22 \div 2 = [11]$

37. $132 \div 11 = [12]$

38. $84 \div 12 = [7]$

39. $99 \div 11 = [9]$

40. $72 \div 6 = [12]$

41. $22 \div 2 = [11]$

42. $11 \div 1 = [11]$

43. $96 \div 12 = [8]$

44. $48 \div 12 = [4]$

45. $44 \div 11 = [4]$

46. $96 \div 12 = [8]$

47. $55 \div 11 = [5]$

48. $60 \div 12 = [5]$

49. $132 \div 11 = [12]$

50. $96 \div 8 = [12]$

51. $99 \div 9 = [11]$

52. $77 \div 11 = [7]$

53. $110 \div 10 = [11]$

54. $132 \div 11 = [12]$

55. $60 \div 12 = [5]$

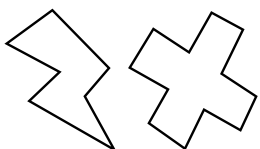
56. $99 \div 11 = [9]$

57. $11 \div 1 = [11]$

58. $48 \div 12 = [4]$

59. $36 \div 3 = [12]$

60. $48 \div 4 = [12]$



SCORE:

Grown-ups:
Can learners spot links
between neighbouring
questions?





CHECK 2



Name: _____

Date: _____

1. $12 \times 12 = [144]$

21. $11 \times 11 = [121]$

41. $121 \div 11 = [11]$

2. $11 \times 9 = [99]$

22. $10 \times 11 = [110]$

42. $12 \div 12 = [1]$

3. $11 \times 3 = [33]$

23. $4 \times 12 = [48]$

43. $96 \div 12 = [8]$

4. $12 \times 2 = [24]$

24. $11 \times 12 = [132]$

44. $12 \div 1 = [12]$

5. $12 \times 6 = [72]$

25. $5 \times 11 = [55]$

45. $132 \div 12 = [11]$

6. $11 \times 11 = [121]$

26. $3 \times 11 = [33]$

46. $84 \div 12 = [7]$

7. $8 \times 11 = [88]$

27. $6 \times 12 = [72]$

47. $96 \div 8 = [12]$

8. $11 \times 2 = [22]$

28. $11 \times 7 = [77]$

48. $72 \div 6 = [12]$

9. $5 \times 12 = [60]$

29. $7 \times 11 = [77]$

49. $96 \div 12 = [8]$

10. $11 \times 5 = [55]$

30. $3 \times 11 = [33]$

50. $55 \div 5 = [11]$

11. $7 \times 12 = [84]$

31. $8 \times 12 = [96]$

51. $12 \div 1 = [12]$

12. $11 \times 3 = [33]$

32. $132 \div 11 = [12]$

52. $66 \div 6 = [11]$

13. $2 \times 11 = [22]$

33. $88 \div 8 = [11]$

53. $132 \div 12 = [11]$

14. $8 \times 12 = [96]$

34. $88 \div 11 = [8]$

54. $132 \div 12 = [11]$

15. $11 \times 11 = [121]$

35. $108 \div 12 = [9]$

55. $132 \div 11 = [12]$

16. $12 \times 1 = [12]$

36. $48 \div 12 = [4]$

56. $120 \div 10 = [12]$

17. $4 \times 12 = [48]$

37. $132 \div 11 = [12]$

57. $48 \div 4 = [12]$

18. $12 \times 11 = [132]$

38. $132 \div 11 = [12]$

58. $77 \div 11 = [7]$

19. $7 \times 12 = [84]$

39. $72 \div 12 = [6]$

59. $88 \div 11 = [8]$

20. $1 \times 12 = [12]$

40. $77 \div 7 = [11]$

60. $22 \div 11 = [2]$

SCORE:
(5 minute limit)

/60

TIME TAKEN (optional)

MINUTES SECONDS

