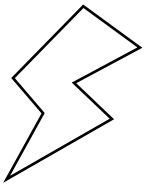
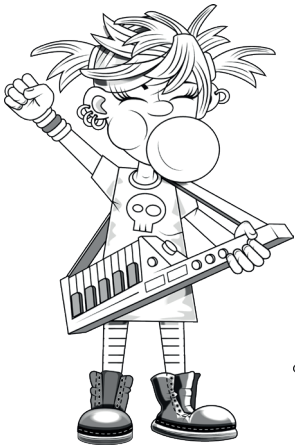


NAME: _____



FULL SET (2s TO 12s)

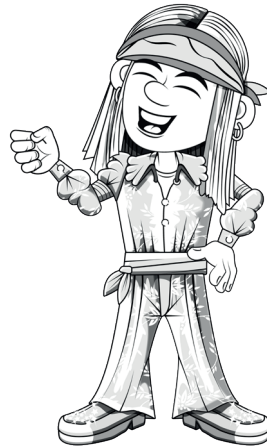
POP



STAR



AIR



ROX



BOLT



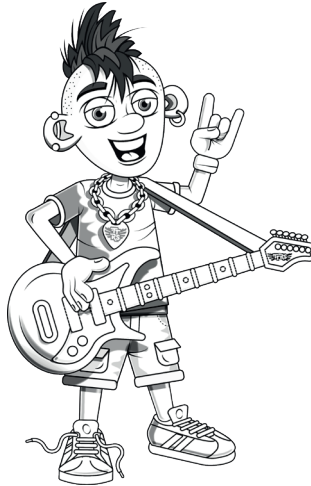
ELECTRA



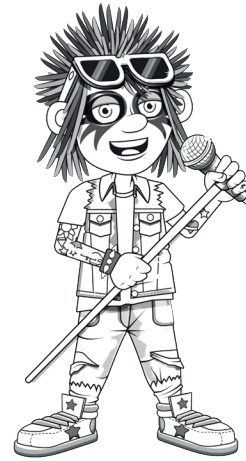
GROOVE



DAZZLE



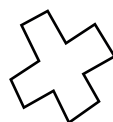
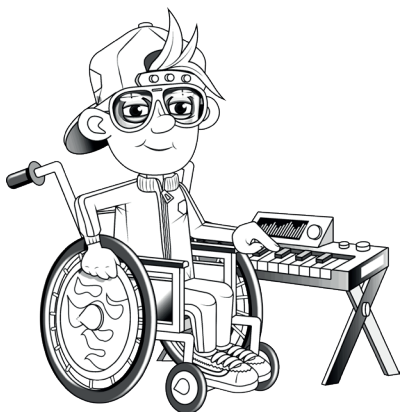
BAZ



ALTO



VIBE



SCORE

BASELINE

CHECK 1

CHECK 2



BASELINE



Name: _____

Date: _____

1. $10 \times 5 = [50]$

21. $7 \times 6 = [42]$

41. $72 \div 8 = [9]$

2. $6 \times 3 = [18]$

22. $10 \times 3 = [30]$

42. $30 \div 10 = [3]$

3. $7 \times 7 = [49]$

23. $11 \times 8 = [88]$

43. $100 \div 10 = [10]$

4. $4 \times 4 = [16]$

24. $10 \times 9 = [90]$

44. $50 \div 10 = [5]$

5. $2 \times 1 = [2]$

25. $5 \times 6 = [30]$

45. $36 \div 9 = [4]$

6. $8 \times 1 = [8]$

26. $8 \times 12 = [96]$

46. $60 \div 6 = [10]$

7. $2 \times 5 = [10]$

27. $7 \times 4 = [28]$

47. $42 \div 6 = [7]$

8. $1 \times 9 = [9]$

28. $12 \times 4 = [48]$

48. $99 \div 11 = [9]$

9. $3 \times 12 = [36]$

29. $2 \times 10 = [20]$

49. $70 \div 7 = [10]$

10. $12 \times 3 = [36]$

30. $6 \times 11 = [66]$

50. $14 \div 2 = [7]$

11. $8 \times 5 = [40]$

31. $12 \times 3 = [36]$

51. $22 \div 2 = [11]$

12. $4 \times 11 = [44]$

32. $42 \div 7 = [6]$

52. $63 \div 9 = [7]$

13. $12 \times 12 = [144]$

33. $45 \div 5 = [9]$

53. $16 \div 4 = [4]$

14. $6 \times 8 = [48]$

34. $36 \div 12 = [3]$

54. $121 \div 11 = [11]$

15. $10 \times 8 = [80]$

35. $32 \div 8 = [4]$

55. $21 \div 3 = [7]$

16. $11 \times 12 = [132]$

36. $12 \div 3 = [4]$

56. $25 \div 5 = [5]$

17. $9 \times 2 = [18]$

37. $84 \div 7 = [12]$

57. $12 \div 4 = [3]$

18. $12 \times 11 = [132]$

38. $5 \div 1 = [5]$

58. $81 \div 9 = [9]$

19. $8 \times 6 = [48]$

39. $56 \div 8 = [7]$

59. $72 \div 6 = [12]$

20. $1 \times 3 = [3]$

40. $12 \div 6 = [2]$

60. $40 \div 4 = [10]$

SCORE:
(5 minute limit)

/60

TIME TAKEN (optional)

<input type="text"/>	<input type="text"/>
----------------------	----------------------

MINUTES SECONDS



Name: _____

Date: _____

MULTIPLICATION 1

Testing 2, 3, 4, 5, 6, 7, 8, 9, 10, 11, 12

1. $6 \times 8 = [48]$

2. $4 \times 7 = [28]$

3. $5 \times 1 = [5]$

4. $3 \times 10 = [30]$

5. $1 \times 11 = [11]$

6. $10 \times 3 = [30]$

7. $9 \times 12 = [108]$

8. $12 \times 11 = [132]$

9. $12 \times 2 = [24]$

10. $9 \times 9 = [81]$

11. $5 \times 7 = [35]$

12. $1 \times 5 = [5]$

13. $7 \times 7 = [49]$

14. $11 \times 2 = [22]$

15. $12 \times 7 = [84]$

16. $4 \times 12 = [48]$

17. $8 \times 5 = [40]$

18. $3 \times 4 = [12]$

19. $1 \times 12 = [12]$

20. $10 \times 7 = [70]$

21. $7 \times 9 = [63]$

22. $8 \times 4 = [32]$

23. $12 \times 2 = [24]$

24. $9 \times 2 = [18]$

25. $12 \times 8 = [96]$

26. $9 \times 10 = [90]$

27. $6 \times 9 = [54]$

28. $11 \times 6 = [66]$

29. $7 \times 12 = [84]$

30. $8 \times 3 = [24]$

31. $3 \times 7 = [21]$

32. $1 \times 11 = [11]$

33. $8 \times 12 = [96]$

34. $2 \times 6 = [12]$

35. $6 \times 9 = [54]$

36. $9 \times 4 = [36]$

37. $10 \times 8 = [80]$

38. $11 \times 6 = [66]$

39. $8 \times 6 = [48]$

40. $12 \times 12 = [144]$

41. $8 \times 4 = [32]$

42. $11 \times 6 = [66]$

43. $4 \times 7 = [28]$

44. $2 \times 8 = [16]$

45. $7 \times 1 = [7]$

46. $9 \times 6 = [54]$

47. $2 \times 9 = [18]$

48. $10 \times 4 = [40]$

49. $11 \times 9 = [99]$

50. $7 \times 6 = [42]$

51. $8 \times 11 = [88]$

52. $11 \times 5 = [55]$

53. $4 \times 1 = [4]$

54. $7 \times 12 = [84]$

55. $7 \times 8 = [56]$

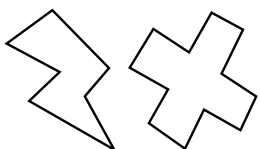
56. $3 \times 8 = [24]$

57. $3 \times 11 = [33]$

58. $8 \times 12 = [96]$

59. $6 \times 2 = [12]$

60. $4 \times 8 = [32]$



SCORE:

Grown-ups:
Can learners spot links
between neighbouring
questions?



Name: _____

Date: _____

MISSING NUMBER 1

Testing 2, 3, 4, 5, 6, 7, 8, 9, 10, 11, 12

1. $[3] \times 9 = 27$

21. $[12] \times 4 = 48$

41. $11 \times [6] = 66$

2. $[8] \times 10 = 80$

22. $[8] \times 12 = 96$

42. $7 \times [6] = 42$

3. $1 \times [4] = 4$

23. $[10] \times 3 = 30$

43. $[6] \times 3 = 18$

4. $10 \times [8] = 80$

24. $[4] \times 10 = 40$

44. $[10] \times 3 = 30$

5. $[1] \times 3 = 3$

25. $[2] \times 6 = 12$

45. $2 \times [9] = 18$

6. $[8] \times 3 = 24$

26. $[3] \times 3 = 9$

46. $[12] \times 2 = 24$

7. $[9] \times 6 = 54$

27. $[9] \times 9 = 81$

47. $6 \times [4] = 24$

8. $4 \times [12] = 48$

28. $[9] \times 3 = 27$

48. $[7] \times 8 = 56$

9. $8 \times [10] = 80$

29. $8 \times [4] = 32$

49. $7 \times [8] = 56$

10. $[6] \times 4 = 24$

30. $[8] \times 7 = 56$

50. $[11] \times 6 = 66$

11. $[9] \times 4 = 36$

31. $9 \times [6] = 54$

51. $12 \times [6] = 72$

12. $[5] \times 7 = 35$

32. $11 \times [11] = 121$

52. $[8] \times 12 = 96$

13. $[8] \times 8 = 64$

33. $[2] \times 10 = 20$

53. $[2] \times 5 = 10$

14. $[8] \times 2 = 16$

34. $[11] \times 11 = 121$

54. $9 \times [9] = 81$

15. $10 \times [10] = 100$

35. $8 \times [12] = 96$

55. $10 \times [12] = 120$

16. $11 \times [5] = 55$

36. $6 \times [9] = 54$

56. $[11] \times 2 = 22$

17. $10 \times [4] = 40$

37. $4 \times [12] = 48$

57. $[1] \times 7 = 7$

18. $5 \times [4] = 20$

38. $[9] \times 10 = 90$

58. $[9] \times 8 = 72$

19. $1 \times [9] = 9$

39. $5 \times [5] = 25$

59. $[10] \times 9 = 90$

20. $[10] \times 6 = 60$

40. $[10] \times 4 = 40$

60. $[8] \times 4 = 32$



SCORE:

Grown-ups:
Can learners spot links
between neighbouring
questions?



Name: _____

Date: _____

DIVISION 1

Testing 2, 3, 4, 5, 6, 7, 8, 9, 10, 11, 12

1. $40 \div 4 = [10]$

21. $22 \div 11 = [2]$

41. $48 \div 6 = [8]$

2. $24 \div 6 = [4]$

22. $30 \div 10 = [3]$

42. $16 \div 2 = [8]$

3. $22 \div 2 = [11]$

23. $90 \div 9 = [10]$

43. $18 \div 6 = [3]$

4. $14 \div 2 = [7]$

24. $88 \div 8 = [11]$

44. $40 \div 10 = [4]$

5. $54 \div 9 = [6]$

25. $48 \div 12 = [4]$

45. $18 \div 6 = [3]$

6. $100 \div 10 = [10]$

26. $42 \div 7 = [6]$

46. $16 \div 8 = [2]$

7. $44 \div 11 = [4]$

27. $56 \div 8 = [7]$

47. $96 \div 12 = [8]$

8. $56 \div 7 = [8]$

28. $84 \div 12 = [7]$

48. $16 \div 2 = [8]$

9. $18 \div 2 = [9]$

29. $30 \div 5 = [6]$

49. $22 \div 2 = [11]$

10. $4 \div 2 = [2]$

30. $72 \div 12 = [6]$

50. $72 \div 8 = [9]$

11. $6 \div 1 = [6]$

31. $77 \div 7 = [11]$

51. $45 \div 9 = [5]$

12. $9 \div 9 = [1]$

32. $18 \div 6 = [3]$

52. $42 \div 6 = [7]$

13. $72 \div 9 = [8]$

33. $28 \div 4 = [7]$

53. $45 \div 9 = [5]$

14. $12 \div 1 = [12]$

34. $25 \div 5 = [5]$

54. $30 \div 10 = [3]$

15. $27 \div 9 = [3]$

35. $4 \div 2 = [2]$

55. $63 \div 9 = [7]$

16. $32 \div 8 = [4]$

36. $18 \div 6 = [3]$

56. $12 \div 3 = [4]$

17. $18 \div 9 = [2]$

37. $30 \div 3 = [10]$

57. $24 \div 8 = [3]$

18. $10 \div 5 = [2]$

38. $21 \div 3 = [7]$

58. $42 \div 6 = [7]$

19. $121 \div 11 = [11]$

39. $9 \div 3 = [3]$

59. $28 \div 7 = [4]$

20. $7 \div 1 = [7]$

40. $88 \div 8 = [11]$

60. $33 \div 11 = [3]$



SCORE:

Grown-ups:
Can learners spot links
between neighbouring
questions?





CHECK 1



Name: _____

Date: _____

1. $2 \times 12 = [24]$

21. $10 \times 5 = [50]$

41. $72 \div 8 = [9]$

2. $5 \times 2 = [10]$

22. $2 \times 3 = [6]$

42. $18 \div 9 = [2]$

3. $11 \times 12 = [132]$

23. $10 \times 3 = [30]$

43. $36 \div 4 = [9]$

4. $4 \times 8 = [32]$

24. $10 \times 3 = [30]$

44. $36 \div 3 = [12]$

5. $1 \times 3 = [3]$

25. $2 \times 4 = [8]$

45. $40 \div 10 = [4]$

6. $7 \times 11 = [77]$

26. $4 \times 12 = [48]$

46. $2 \div 2 = [1]$

7. $3 \times 6 = [18]$

27. $1 \times 6 = [6]$

47. $48 \div 6 = [8]$

8. $7 \times 6 = [42]$

28. $12 \times 1 = [12]$

48. $120 \div 10 = [12]$

9. $3 \times 6 = [18]$

29. $7 \times 7 = [49]$

49. $30 \div 10 = [3]$

10. $1 \times 7 = [7]$

30. $5 \times 2 = [10]$

50. $42 \div 7 = [6]$

11. $7 \times 8 = [56]$

31. $3 \times 1 = [3]$

51. $66 \div 11 = [6]$

12. $7 \times 2 = [14]$

32. $22 \div 11 = [2]$

52. $96 \div 8 = [12]$

13. $8 \times 5 = [40]$

33. $96 \div 12 = [8]$

53. $15 \div 3 = [5]$

14. $5 \times 3 = [15]$

34. $132 \div 11 = [12]$

54. $48 \div 12 = [4]$

15. $11 \times 2 = [22]$

35. $27 \div 3 = [9]$

55. $32 \div 8 = [4]$

16. $8 \times 10 = [80]$

36. $49 \div 7 = [7]$

56. $64 \div 8 = [8]$

17. $2 \times 7 = [14]$

37. $100 \div 10 = [10]$

57. $5 \div 5 = [1]$

18. $4 \times 5 = [20]$

38. $30 \div 6 = [5]$

58. $16 \div 8 = [2]$

19. $2 \times 12 = [24]$

39. $12 \div 4 = [3]$

59. $12 \div 12 = [1]$

20. $8 \times 6 = [48]$

40. $70 \div 10 = [7]$

60. $14 \div 2 = [7]$

SCORE:
(5 minute limit)

/60

TIME TAKEN (optional)

MINUTES SECONDS



Name: _____

Date: _____

MULTIPLICATION 2

Testing 2, 3, 4, 5, 6, 7, 8, 9, 10, 11, 12

1. $7 \times 12 = [84]$

2. $8 \times 2 = [16]$

3. $8 \times 9 = [72]$

4. $1 \times 3 = [3]$

5. $12 \times 5 = [60]$

6. $9 \times 4 = [36]$

7. $6 \times 10 = [60]$

8. $3 \times 3 = [9]$

9. $11 \times 9 = [99]$

10. $10 \times 8 = [80]$

11. $8 \times 3 = [24]$

12. $9 \times 6 = [54]$

13. $7 \times 10 = [70]$

14. $5 \times 3 = [15]$

15. $9 \times 6 = [54]$

16. $6 \times 1 = [6]$

17. $2 \times 8 = [16]$

18. $1 \times 12 = [12]$

19. $7 \times 9 = [63]$

20. $3 \times 5 = [15]$

21. $9 \times 4 = [36]$

22. $5 \times 3 = [15]$

23. $9 \times 10 = [90]$

24. $2 \times 5 = [10]$

25. $1 \times 10 = [10]$

26. $8 \times 2 = [16]$

27. $3 \times 5 = [15]$

28. $5 \times 5 = [25]$

29. $12 \times 9 = [108]$

30. $4 \times 4 = [16]$

31. $12 \times 2 = [24]$

32. $4 \times 5 = [20]$

33. $2 \times 8 = [16]$

34. $2 \times 6 = [12]$

35. $8 \times 4 = [32]$

36. $9 \times 9 = [81]$

37. $4 \times 8 = [32]$

38. $11 \times 12 = [132]$

39. $3 \times 5 = [15]$

40. $5 \times 6 = [30]$

41. $8 \times 1 = [8]$

42. $12 \times 2 = [24]$

43. $7 \times 4 = [28]$

44. $9 \times 2 = [18]$

45. $11 \times 10 = [110]$

46. $8 \times 1 = [8]$

47. $3 \times 7 = [21]$

48. $6 \times 6 = [36]$

49. $6 \times 8 = [48]$

50. $2 \times 3 = [6]$

51. $7 \times 11 = [77]$

52. $3 \times 2 = [6]$

53. $4 \times 6 = [24]$

54. $12 \times 6 = [72]$

55. $3 \times 4 = [12]$

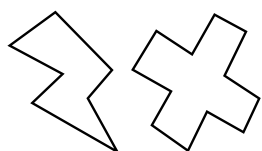
56. $6 \times 10 = [60]$

57. $10 \times 8 = [80]$

58. $1 \times 9 = [9]$

59. $6 \times 8 = [48]$

60. $10 \times 12 = [120]$



SCORE:

Grown-ups:
Can learners spot links
between neighbouring
questions?



Name: _____

Date: _____

MISSING NUMBER 2

Testing 2, 3, 4, 5, 6, 7, 8, 9, 10, 11, 12

1. $1 \times [6] = 6$

2. $3 \times [9] = 27$

3. $5 \times [3] = 15$

4. $2 \times [8] = 16$

5. $7 \times [7] = 49$

6. $[12] \times 11 = 132$

7. $7 \times [6] = 42$

8. $[1] \times 4 = 4$

9. $[7] \times 11 = 77$

10. $[5] \times 2 = 10$

11. $6 \times [3] = 18$

12. $[7] \times 9 = 63$

13. $9 \times [11] = 99$

14. $[11] \times 4 = 44$

15. $1 \times [6] = 6$

16. $[2] \times 7 = 14$

17. $8 \times [1] = 8$

18. $8 \times [4] = 32$

19. $[7] \times 1 = 7$

20. $9 \times [6] = 54$

21. $[8] \times 8 = 64$

22. $10 \times [2] = 20$

23. $[8] \times 4 = 32$

24. $[2] \times 2 = 4$

25. $11 \times [6] = 66$

26. $2 \times [3] = 6$

27. $[11] \times 12 = 132$

28. $7 \times [2] = 14$

29. $3 \times [3] = 9$

30. $8 \times [11] = 88$

31. $6 \times [3] = 18$

32. $[1] \times 6 = 6$

33. $11 \times [7] = 77$

34. $[5] \times 5 = 25$

35. $8 \times [12] = 96$

36. $[7] \times 4 = 28$

37. $12 \times [3] = 36$

38. $5 \times [4] = 20$

39. $[11] \times 3 = 33$

40. $6 \times [8] = 48$

41. $[1] \times 2 = 2$

42. $7 \times [5] = 35$

43. $9 \times [5] = 45$

44. $2 \times [5] = 10$

45. $3 \times [3] = 9$

46. $[7] \times 12 = 84$

47. $[1] \times 9 = 9$

48. $[11] \times 1 = 11$

49. $[3] \times 10 = 30$

50. $4 \times [10] = 40$

51. $9 \times [8] = 72$

52. $[3] \times 6 = 18$

53. $[6] \times 7 = 42$

54. $[8] \times 11 = 88$

55. $[2] \times 8 = 16$

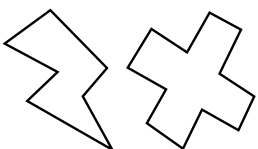
56. $[10] \times 4 = 40$

57. $[3] \times 10 = 30$

58. $[4] \times 7 = 28$

59. $[2] \times 5 = 10$

60. $[10] \times 5 = 50$



SCORE:

Grown-ups:
Can learners spot links
between neighbouring
questions?



Name: _____

Date: _____

DIVISION 2

Testing 2, 3, 4, 5, 6, 7, 8, 9, 10, 11, 12

1. $72 \div 12 = [6]$

2. $4 \div 4 = [1]$

3. $24 \div 2 = [12]$

4. $18 \div 9 = [2]$

5. $40 \div 10 = [4]$

6. $80 \div 10 = [8]$

7. $32 \div 8 = [4]$

8. $36 \div 9 = [4]$

9. $40 \div 10 = [4]$

10. $15 \div 3 = [5]$

11. $10 \div 1 = [10]$

12. $36 \div 6 = [6]$

13. $96 \div 8 = [12]$

14. $144 \div 12 = [12]$

15. $11 \div 1 = [11]$

16. $20 \div 10 = [2]$

17. $8 \div 4 = [2]$

18. $16 \div 4 = [4]$

19. $6 \div 2 = [3]$

20. $84 \div 12 = [7]$

21. $36 \div 4 = [9]$

22. $27 \div 3 = [9]$

23. $6 \div 6 = [1]$

24. $56 \div 7 = [8]$

25. $49 \div 7 = [7]$

26. $121 \div 11 = [11]$

27. $35 \div 5 = [7]$

28. $9 \div 3 = [3]$

29. $64 \div 8 = [8]$

30. $18 \div 6 = [3]$

31. $10 \div 1 = [10]$

32. $54 \div 9 = [6]$

33. $30 \div 10 = [3]$

34. $54 \div 9 = [6]$

35. $72 \div 6 = [12]$

36. $48 \div 8 = [6]$

37. $120 \div 10 = [12]$

38. $16 \div 2 = [8]$

39. $36 \div 3 = [12]$

40. $36 \div 3 = [12]$

41. $6 \div 3 = [2]$

42. $96 \div 8 = [12]$

43. $16 \div 4 = [4]$

44. $24 \div 8 = [3]$

45. $48 \div 6 = [8]$

46. $21 \div 3 = [7]$

47. $33 \div 3 = [11]$

48. $44 \div 11 = [4]$

49. $22 \div 2 = [11]$

50. $81 \div 9 = [9]$

51. $84 \div 12 = [7]$

52. $32 \div 4 = [8]$

53. $10 \div 10 = [1]$

54. $10 \div 2 = [5]$

55. $35 \div 7 = [5]$

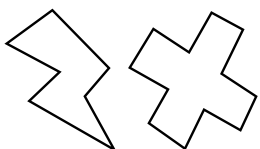
56. $12 \div 6 = [2]$

57. $33 \div 11 = [3]$

58. $32 \div 8 = [4]$

59. $12 \div 2 = [6]$

60. $15 \div 3 = [5]$



SCORE:

Grown-ups:
Can learners spot links
between neighbouring
questions?





CHECK 2



Name: _____

Date: _____

1. $3 \times 10 = [30]$

21. $5 \times 8 = [40]$

41. $32 \div 8 = [4]$

2. $2 \times 2 = [4]$

22. $8 \times 3 = [24]$

42. $36 \div 6 = [6]$

3. $7 \times 9 = [63]$

23. $4 \times 2 = [8]$

43. $90 \div 10 = [9]$

4. $1 \times 9 = [9]$

24. $6 \times 4 = [24]$

44. $12 \div 3 = [4]$

5. $4 \times 12 = [48]$

25. $6 \times 11 = [66]$

45. $15 \div 3 = [5]$

6. $6 \times 7 = [42]$

26. $2 \times 11 = [22]$

46. $72 \div 9 = [8]$

7. $2 \times 4 = [8]$

27. $1 \times 2 = [2]$

47. $20 \div 10 = [2]$

8. $7 \times 3 = [21]$

28. $3 \times 9 = [27]$

48. $24 \div 6 = [4]$

9. $5 \times 3 = [15]$

29. $11 \times 4 = [44]$

49. $30 \div 6 = [5]$

10. $1 \times 8 = [8]$

30. $9 \times 2 = [18]$

50. $12 \div 6 = [2]$

11. $8 \times 8 = [64]$

31. $5 \times 9 = [45]$

51. $77 \div 11 = [7]$

12. $5 \times 10 = [50]$

32. $16 \div 2 = [8]$

52. $70 \div 7 = [10]$

13. $9 \times 2 = [18]$

33. $2 \div 2 = [1]$

53. $16 \div 4 = [4]$

14. $7 \times 5 = [35]$

34. $54 \div 6 = [9]$

54. $11 \div 11 = [1]$

15. $11 \times 8 = [88]$

35. $7 \div 1 = [7]$

55. $8 \div 1 = [8]$

16. $7 \times 2 = [14]$

36. $45 \div 9 = [5]$

56. $42 \div 7 = [6]$

17. $9 \times 11 = [99]$

37. $90 \div 9 = [10]$

57. $9 \div 9 = [1]$

18. $10 \times 11 = [110]$

38. $6 \div 3 = [2]$

58. $21 \div 7 = [3]$

19. $9 \times 1 = [9]$

39. $120 \div 10 = [12]$

59. $84 \div 7 = [12]$

20. $4 \times 4 = [16]$

40. $15 \div 3 = [5]$

60. $32 \div 8 = [4]$

SCORE:
(5 minute limit)

/60

TIME TAKEN (optional)

MINUTES SECONDS

